



20th
 Annual Report 2017-2018
Anniversary



lifting children to better beginnings

a partner in the
 smart start network™ 

738 Home Visits
 were Conducted
 by Parent
 Educators

302
 Children
 Enrolled in NC
 Pre-K

988 Children
 Served
 Through
 Quality
 Support
 Services

370 Parents
 Received Child
 Care and/or
 Community Referrals

103
 Child Care
 Providers

Received
 Health
 Consultation
 Training

212 Child Care
 Professionals Completed
 Professional
 Development Plans

2060
 New
 Children

Enrolled
 in
 DPIL



We are pleased to share this special edition annual report with you illustrating our achievements from July 1, 2017- June 30, 2018 and celebrating our 20 years of service to the children and families of Iredell County.

I officially started my tenure as Executive Director on January 4, 2018, so I must thank and recognize Vivian Hamilton and Marta Koesling for their leadership and guidance as the first and second executive directors, respectively, of the Iredell County Partnership for Young Children. Their dedication and passion is ingrained in the heart and soul of this organization.

The Partnership has made great progress since it first opened its doors 20 years ago, however, there is much left to do. While we are proud to celebrate our accomplishments, we do so with the knowledge that there are still many challenges that lie ahead as the needs of our children and families continue to grow. We also know that communities thrive when children thrive and will continue to seek innovative ways to address the critical needs of the young children and families in our community and we look forward to a joint effort to achieve continued success in the coming year.

We look to the future with commitment and hope for a better tomorrow for our youngest citizens and invite you to join us on this journey to bring about positive changes that will last a lifetime!

Lisa M. Familo
Executive Director



As those interested in the development of young children in Iredell County and as early childhood educators, we know how important the first 2000 days are to a child's early learning and development. Twenty years ago, the Iredell County Partnership for Young Children was formed and set out on a mission to educate families and the community on how to improve the early care and education, family support and health of our youngest and most valuable assets.

Since ICPYC opened in 1998, the children who are enrolled in supported centers are receiving the highest quality service in the history of the Partnership. Sixty-nine percent of our children served are now cared for in 4 and 5 Star centers. Over this same time period, the average star rating has increased from 2.43 to 4.02. In more than half of the supported centers, at least 75% of the lead teachers have college degrees. Last year over 361 teachers and directors at 22 facilities received direct technical assistance, training and support to expand their educational opportunities and increase quality of care.

The Partnership has also helped to educate parents on the importance of reading to children and providing a safe and healthy home environment for them to grow and thrive. Forty percent of the parents report reading to their children daily and 83% of children enrolled in Medicaid report receiving a well-child exam. Information and services on early intervention or special education services are also provided to help the children get an early jump start on learning. The Parents as Teachers Program reported providing services to 71 parents in 2017-18 and made parent referrals to 199 partner agencies in the community.

In the last year, ICPYC has launched the Dolly Parton Imagination Library initiative. Any child birth to age 4 can sign up for the program to receive an age appropriate book each month through his/her fifth birthday. In FY 17-18, 2461 children in Iredell County received books to read with their parents/caregivers.

ICPYC is celebrating 20 years of helping families and early childhood educators provide a solid foundation for our youngest community members. These children will grow up to be our next generation of leaders. Thanks for your support in helping to ensure that these first 2000 days are rock solid for our next generation.

Melanie Taylor, Ed.D
ICPYC Board Chair

a partner in the smart start network™ 





Our Mission

To ensure that all children in Iredell County enter kindergarten healthy and ready to succeed.

FY 2017-2018 Community Impact

Family Support

Parents as Teachers – Parent educators conducted **738** home visits to **71** parents. **199** referrals were made to partnering agencies for services. **40** children received developmental screenings.

Together Time Playgroups – **56** parent/caregivers and **53** children participated in weekly playgroups throughout Iredell County.

Early Care & Education

Child Care Solutions/Child Care Resource & Referral (CCR&R) – **370** families received child care and/or community referrals and information related to selecting high quality child care.

Comprehensive Benefits – **64** child care providers from **11** facilities were reimbursed for health insurance benefits and participated in dental, life and short-term disability coverage, impacting **379** children.

Early Learning Resource Center (ELRC) – **171** families and **100** early childhood professionals joined the Early Learning Resource Center, utilizing the resource materials for their children a total of **932** times. **60** parents/guardians attended workshops in the ELRC.

NC Pre-Kindergarten Coordination (NC Pre-K) – **302** children were enrolled in high quality NC Pre-K classrooms. **30** child care professionals attended trainings or workshops. **454** technical assistance (TA) visits were provided to NC Pre-K classrooms.

Professional Development – **323** child care providers participated in **45** professional development workshops. **212** child care providers created professional development plans and **24** earned *Education Awards* for completing college coursework and/or degrees.

Quality Support Specialists (QSS) – **424** on-site technical assistance (TA) visits were conducted to support classrooms impacting **1,350** children.

WAGES® Project – **54** child care providers in **33** facilities received a salary supplement based on their level of education.

Child Health

Child Care Health Consultant (CCHC) – **195** on-site technical assistance (TA) visits were provided to **103** early childhood professionals at **47** child care facilities.

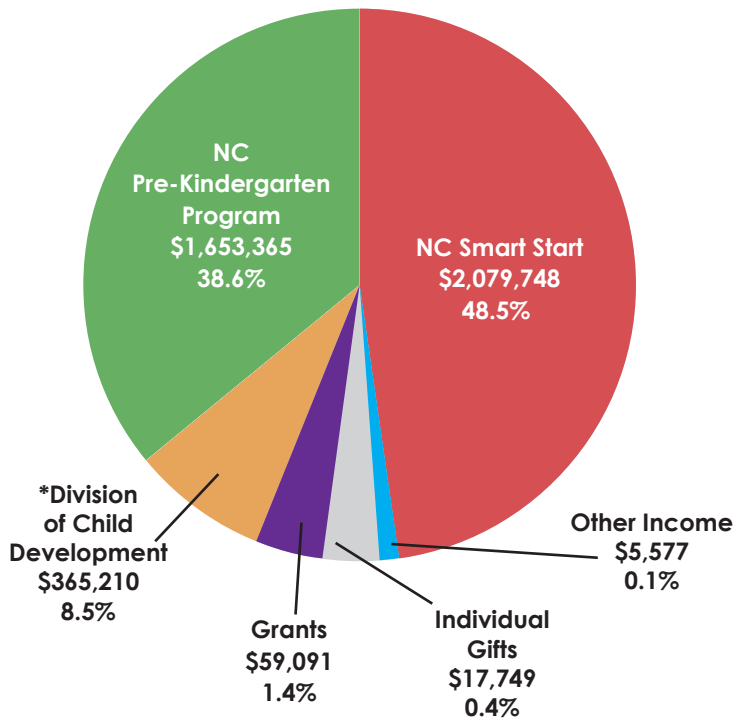
Early Literacy

Dolly Parton's Imagination Library (DPIL) – **12,602** books were distributed to **2,461** children enrolled in Dolly Parton's Imagination Library.

Iredell County Partnership for Young Children

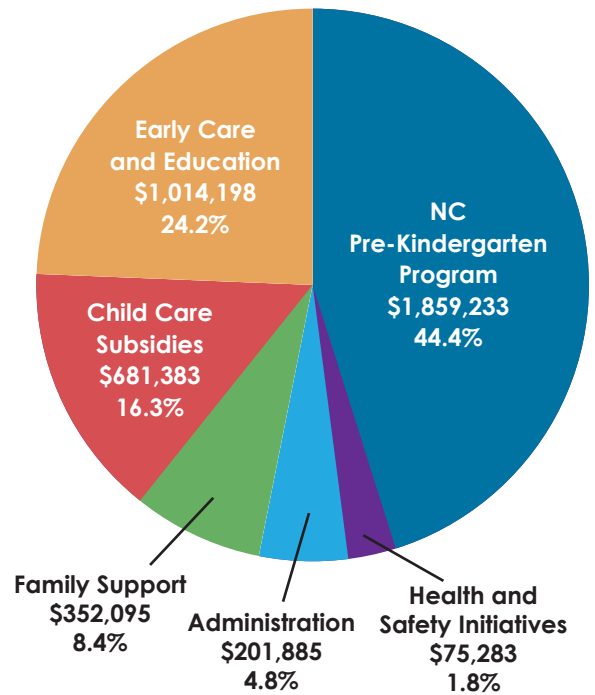
Financial Data
July 1, 2017 - June 30, 2018

Revenue



Total Revenue: \$4,196,955

Expenditures



Total Expenditures: \$4,184,077

* The Iredell County Partnership for Young Children is the Lead Agency for a nine-county Child Care Resource and Referral region comprised of Alexander, Avery, Burke, Caldwell, Iredell, McDowell, Mitchell, Yancey and Watauga counties. All funds flow through the Iredell County Partnership.

ICPYC Staff

| | |
|---------------------|------------------------|
| Sydney Austin | Carolyn McLelland |
| Gretchen C. Blevins | Kim Mitcham |
| Michelle Boyles | Taketha Norman |
| Stephanie Clark | Shaina Pearce |
| Candice E. Dimmette | Silvia V. Plaza-Garcia |
| Viviana Dorantes | Lisa Pullis |
| Lisa M. Familo | Marnie Reber |
| Christen Fries | Joanne Rogers |
| Shelby Hamm | Bethany Schaefer |
| Missy Jablonski | Alicia Shell |
| Glenda Lambert | |

2017-2018 ICPYC Board of Directors

| | |
|----------------------------|------------------|
| Dr. Melanie Taylor, Chair | |
| Norma Rife, 1st Vice Chair | |
| Judy Morgan, Treasurer | |
| Gale Coor | Gwen Morrison |
| Stephanie Davis | Marvin Norman |
| Stephanie Funderburk | Dawn Rogers |
| Nancy Keith | Dr. Scott Smith |
| Dennis Long | Titania Stockton |
| Lisa McBroom | Robert Woody |