

V-2426 CITCO RED DRUM ENAMEL

TECHNICAL DATA SHEET



PRODUCT DESCRIPTION: V-2426 Citco Red Drum Enamel is a fast drying alkyd enamel for general purpose industrial use. This product features excellent gloss and color retention for interior and exterior exposure in mild and moderately corrosive environments. Dries to touch in 10 minutes by air dry. These enamels can be manufactured in any gloss or color.

INTENDED USES: V-2426 is formulated for use on pr, structural steel, and construction equipment. Properly prepared substrates such as metal. Its primary use is a fast dry reconditioning drum enamel, where a high gloss, quality product is desired for extended durability. Other intended uses are for ornamental ironwork

SURFACE PREPERATIONS: For best results it is important that all surface contaminants, such as moisture, oil, dirt, rust and mil scale be removed before application. V-2426 can be applied to either blasted, hand or power tool cleaned steel. A minimum of SSPC-2 hand tool cleaning required.

PHYSICAL INFORMATION

COLOR: CITCO RED

GLOSS: GLOSS

SOLIDS BY WEIGHT: 59%

RECOMMENDED DRY FILM THICKNESS: 1.5-2.0 MILS DFT

THEORETICAL COVERAGE: 350-450 SQ FT PER GALLON

METHOD OF APPLICATION: AIRLESS SPRAY, AIR SPRAY

DRYING TIME @ 72 F

TO TOUCH: 15-30 MINUTES

TO HANDLE: 60 MINUTES

TO RECOAT: within 6 hours or after 5 days

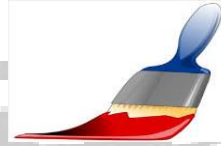
REGULATORY DATA

FLASHPOINT: 85F

PRODUCT WEIGHT: 8.15 LBS

MATERIAL VOC: 3.46 POUNDS PER GALLON / 415 GRAMS PER LITER

COATING VOC: 3.46 POUNDS PER GALLON / 415 GRAMS PER LITER



APPLICATION

TECHNICAL DATA SHEET

MIXING: This material is a one-component coating and should always be mixed thoroughly with a power agitator before application.

MIX RATION: Not applicable

WORKING POT LIFE: Not applicable

AIRLESS SPRAY: Suitable

Tip Range 15-17 thou (0.38-0.43mm)
total output fluid pressure at spray tip not less than 2,500 P.S.I.

AIR SPRAY: Suitable
(Pressure Pot)

Gun	DeVilbiss	MBC or JGA
Air Cap	704	
Tip	E	

BRUSH: Suitable

Typically 1.5-2.0 mils can be achieved. Care should be taken to avoid under application.

ROLLER: Suitable

Typically 1.5-2.0 mils can be achieved. Care should be taken to avoid under application.

THINNER: Xylene

Do not thin more than allowed by local environmental legislation when applicable.

CLEANER: Xylene

WORK STOPPAGES: Thoroughly flush all equipment with xylene. All unused material should be stored in tightly closed containers. Partially filled containers may show surface skinning and/or viscosity increase of the material after storage. Material should be filtered prior to use.

CLEAN UP: Clean all equipment immediately with xylene. It is good working practice to periodically flush out spray equipment during the course of the working day. Frequency of cleaning will depend upon amount sprayed, temperature and elapsed time, including any delays.

All surplus materials and empty containers should be disposed of in accordance with appropriate regional regulations legislation.

SYSTEM COMPATIBILITY:

The following primers are recommended for this topcoat

Universal Primers

Epoxy Primers

SHIPPING & STORAGE

NUMBER OF COMPONENTS:

PACKAGED IN: 55-Gallon Drums, 5 Gallon Pails, and 1 Gallon Cans.

STORAGE TEMPERATURE: Minimum 20 F. Maximum 110F