

MS COLORFAST45® PAINT SYSTEM

29 & 26 GAUGE



White (30)



Polar White (80)



Light Stone (63)



Mocha Tan (22)



Carlsbad Canyon (10)



Ash Grey (25)



Charcoal (17)



Burnished Slate (49)



Burgundy (15)



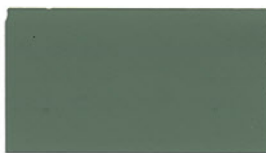
Ocean Blue (35)



Forest Green (26)



Fern Green (07) Low Gloss



Patina Green (58)



Black (06)

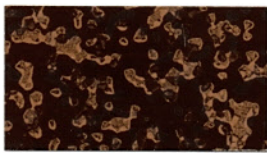


Patriot Red (73)



Native Copper (190)

Upcharge will apply



Rustic Steel (W45) PVDF

26 Ga. Only Upcharge will apply



Galvalume (41)

Non-Painted Finish 25 Year Warranty



Red (24)

Red (23) Low Gloss 29 Ga.



Brown (12)

Brown (11) Low Gloss 29 Ga.

MS COLORFAST45® PAINT SYSTEM

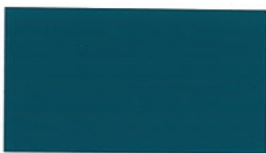
29 GAUGE ONLY



Ivory (28)



Dark Blue (21)



Blue (09)



Mocha Brown (13)

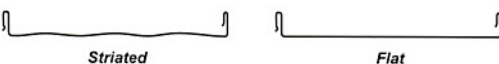


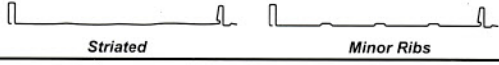












★ All Colors Meet or Exceed
Steep Slope ENERGY STAR®
Requirements

45 Year Paint Warranty

All colors carry a 45 year limited paint warranty
Color selections are close representations but are limited by
processing and viewing conditions. Actual samples are available by request.

PRODUCT SOLUTION CHART

PANEL	PROFILE	COVERAGE	MS COLORFAST45®		ACRYLIC COATED GALVALUME®	
			29 GA	26 GA	29 GA	26 GA
VERTICAL SEAM		12"/16"/18"		◆		●
MINI-BATTEN		12"/16"/18"		◆		●
SOFFIT PANEL		12"		●		●
IMAGE II		12"/16"		●		●
PRO-PANEL II®		36"	●	●	●	●
CLASSIC RIB®		36"	●	●	●	●
PBR-PANEL		36"		●		●
IC72-PANEL		36"		●		●
7/8" CORRUGATED		Roof 32" Wall 34 ² / ₃ "		●		●
2.5" CORRUGATED		24"		■	●	●
1.25" CORRUGATED*		24"		■		●
5V-CRIMP*		24"	■	■	●	●
PBU-PANEL*		36"		■		●
SPAN-LINE 36A*		36"		■		●

Notes:

- ▶ For other colors, finishes, gauges, and materials, please inquire
- ▶ For Image II panel, refer to Image II panel brochure for color selections
- ▶ For panels with asterisk (*) longer lead times will apply

Legend:

- Standard colors are available in any quantity
- ◆ For standard colors, minimum quantity may be required
- Available in limited standard colors

PAINT SYSTEMS

We use high quality paint systems designed to provide long term performance and protection. Each coating is formulated with thoroughly researched, tested and field proven pre-treatments, primers, resins, and pigments that can meet your standard and performance requirements.

MS Colorfast45® is a thermoset coating system composed of polyester resin which has been modified with a silicone resin. Much like PVDF finish, the MS Colorfast45 finish offers good protection to the elements with special consideration to chalk and fade resistance, durability, and chemical resistance.

APPLICATION PRECAUTIONS

Avoid installing directly over green or damp lumber, porous insulation, or other damaging materials. The use of a moisture barrier is recommended in such situations. Strong chemicals, such as fertilizer, manure, some soils, and lime may cause damage. Storage or application near such materials should be avoided.

STORAGE INSTRUCTIONS

If metal roofing or siding is not going to be used immediately, it should be stored in a dry area. It should be unbundled and stood on end against an interior wall. If materials must be stored outside, protect with canvas or waterproof paper. Allow for air circulation, do not cover air tight.