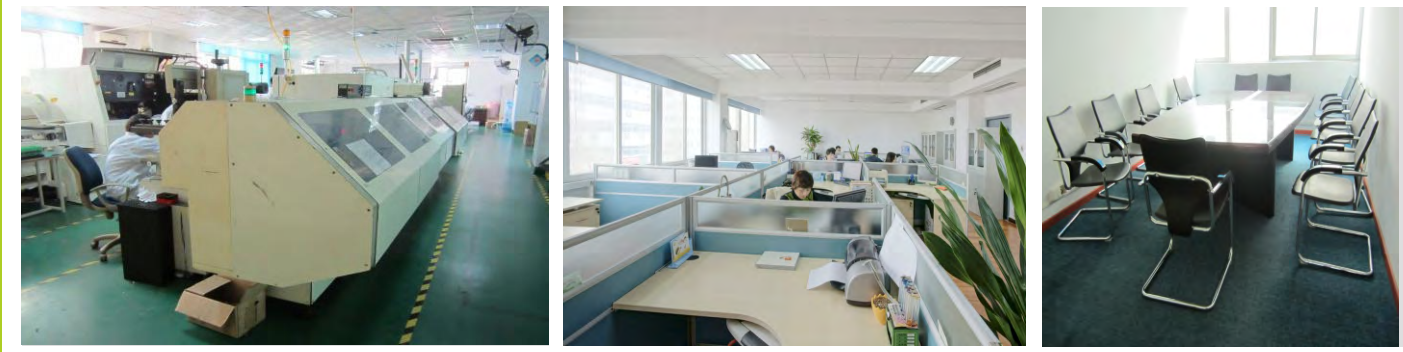


The logo features a large, glowing orange arc that curves across the top and right side of the image. A bright lens flare emanates from the right end of this arc. The word "ECLIPSE" is written in a bold, stylized font with a white-to-orange gradient and a black outline. Below it, the words "LED SIGNS" are written in a smaller, orange, sans-serif font, flanked by two horizontal lines.

**ECLIPSE**

— LED SIGNS —



# Company profile

We have built a wide range of LED display products over the years, including indoor and outdoor led display, stadium display, commercial advertising display, rental display, led sign, led curtain and so on.

**Eclipse LED Signs**, is a professional management, R&D, production with strong service teams. **Eclipse LED Signs**, has established long term partnership with world known giants such as Nichia, Cree, Epistar and Optotech corporation which fully represents the modern enterprise of efficient resources sharing, well-round participation & cooperation, mutual benefit & common development and high-efficiency operation.

Our products widely exported to America, Europe, Asia, and the Africa market. We always keep high quality materials, best solutions and service for our customers .Our good quality and professional service bring us more orders and are well spoken of in the market. Our products comply with CE,RoHS,FCC,ISO,UL,SASO Certificates.

Our goal is to provide our customers with the highest value of the service and professional solutions.



## Product catalog

- |  |                                      |
|--|--------------------------------------|
| 1. Indoor die-casting aluminum         | 9. LED curtain                       |
| 2. Indoor aluminum led display         | 10. <b>ECLIPSE LED</b> display cases |
| 3. Led display series                  | 11. Synchronous control              |
| 4. Fixed installation                  | 12. Asynchronous control             |
| 5. Outdoor rental die-casting aluminum | 13. Installation structure           |
| 6. Stadium led display                 | 14. LED display application          |
| 7. Front service led sign              | 15. Certificates                     |
| 8. Mobile truck led display            | 16. Service                          |





## Indoor Die-Casting Aluminum



### Features

Easy to install and dismantle Super slim and light weight High refresh rate Wide view angle



### Typical Applications

TV show  
All kinds of event Live show, exhibition



Pixel	2.5mm	3mm	4mm	5mm	6mm
Pixel encapsulation	SMD2121	SMD2121	SMD2121	SMD3528	SMD3528
LED composition	1R1G1B	1R1G1B	1R1G1B	1R1G1B	1R1G1B
Module size	160x160mm	192x192mm	256x128mm	320x160mm	192x192mm
Cabinet size	480x480mm	576x576mm	512x512mm	640x640mm	576x576mm
View angle	140°/140°	140°/140°	140°/140°	140°/140°	140°/140°
Refresh rate	≥2000Hz	≥2000Hz	≥2000Hz	≥2500Hz	≥2500Hz
Driving method	1/32scan	1/32scan	1/16scan	1/8scan	1/8scan
Brightness	≥1800nits	≥2000nits	≥2200nits	≥2800nits	≥2800nits
Viewing distance	≥1.5m	≥2m	≥3m	≥4m	≥5m
Power	Max300W Avg 150W	Max300W Avg 150W	Max200W Avg 120W	Max200W Avg 120W	Max200W Avg 120W
Working voltage	110V/220V	110V/220V	110V/220V	110V/220V	110V/220V
Working temp	-30°Cto +65°C	-30°Cto +65°C	-30°Cto +65°C	-30°Cto +65°C	-30°Cto +65°C
Working humidity	10%~90%	10%~90%	10%~90%	10%~90%	10%~90%
MTBF	>10,000hours	>10,000hours	>10,000hours	>10,000hours	>10,000hours
Pixel density	160,000pixel/m <sup>2</sup>	111,111pixel/m <sup>2</sup>	62,500pixel/m <sup>2</sup>	40,000pixel/m <sup>2</sup>	27,777pixel/m <sup>2</sup>
Lifespan	>100,000hours	>100,000hours	>100,000hours	>100,000hours	>100,000hours

## Indoor Aluminum LED Display

### Indoor series

More fast more light

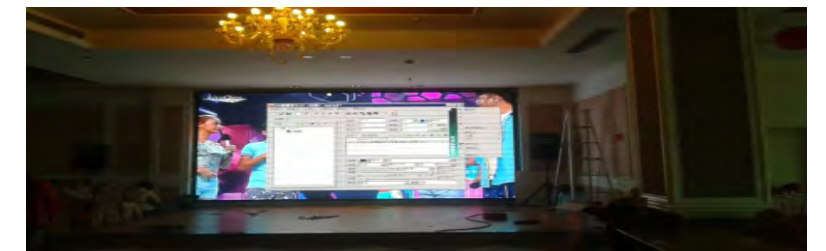


Color ● ● ● ● ●



### Features

Easy to install and dismantle Super slim and light weight High refresh rate Wide view angle



### Typical Applications

TV show  
All kinds of event  
Live show, exhibition



Pixel	4mm	5mm	6mm	7.62mm	10mm
Pixel encapsulation	SMD2121	SMD3528	SMD3528	SMD3528	SMD3528
LED composition	1R1G1B	1R1G1B	1R1G1B	1R1G1B	1R1G1B
Module size	256x128mm	160x160mm	192x192mm	244x244mm	320x160mm
Cabinet size	512x512mm	640x640mm	576x576mm	732x732mm	640x640mm
View angle	140°/140°	140°/140°	140°/140°	140°/140°	140°/140°
Refresh rate	≥2000Hz	≥2500Hz	≥2500Hz	≥2500Hz	≥3000Hz
Driving method	1/16scan	1/8scan	1/8scan	1/8scan	1/8scan
Brightness	≥2200nits	≥2800nits	≥2800nits	≥2200nits	≥1800nits
Viewing distance	≥3m	≥4m	≥5m	≥6m	≥9m
Power	Max300W Avg 150W	Max200W Avg 120W	Max200W Avg 120W	Max200W Avg 120W	Max200W Avg 120W
Working voltage	110V/220V	110V/220V	110V/220V	110V/220V	110V/220V
Working temp	-30°Cto +65°C	-30°Cto +65°C	-30°Cto +65°C	-30°Cto +65°C	-30°Cto +65°C
Working humidity	10%~90%	10%~90%	10%~90%	10%~90%	10%~90%
MTBF	>10,000hours	>10,000hours	>10,000hours	>10,000hours	>10,000hours
Pixel density	62,500pixel/m <sup>2</sup>	40,000pixel/m <sup>2</sup>	27,777pixel/m <sup>2</sup>	17,222pixel/m <sup>2</sup>	10,000pixel/m <sup>2</sup>
Lifespan	>100,000hours	>100,000hours	>100,000hours	>100,000hours	>100,000hours



## LED Display Series

### Indoor series

LEDs							
Pixel	2.5mm	3mm	4mm	5mm	6mm	7.62mm	10mm
Pixel encapsulation	SMD2121	SMD2121	SMD2121	SMD3528	SMD3528	SMD3528	SMD1616
LED composition	1R1G1B	1R1G1B	1R1G1B	1R1G1B	1R1G1B	1R1G1B	1R1G1B
Module size	160x160mm	192x192mm	256x128mm	160x160mm	192x192mm	244x244mm	320x160mm
Cabinet size	480x480mm	576x576mm	512x512mm	800x800mm	960x960mm	976x976mm	960x960mm
View angle	140°/140°	140°/140°	140°/140°	140°/140°	140°/140°	140°/140°	140°/140°
Refresh rate	≥1800Hz	≥2000Hz	≥2000Hz	≥2500Hz	≥2500Hz	≥2500Hz	≥3000Hz
Driving method	1/32scan	1/32scan	1/16scan	1/8scan	1/8scan	1/8scan	1/8scan
Brightness	≥1800nits	≥2000nits	≥2200nits	≥2800nits	≥2800nits	≥2200nits	≥1800nits
Viewing distance	≥1.5m	≥2m	≥3m	≥4m	≥5m	≥6m	≥9m
Power	Max1000W/m <sup>2</sup> Avg 450W	Max1000W/m <sup>2</sup> Avg 450W	Max800W/m <sup>2</sup> Avg 400W	Max800W/m <sup>2</sup> Avg 350W	Max800W/m <sup>2</sup> Avg 300W	Max800W/m <sup>2</sup> Avg 300W	Max600W/m <sup>2</sup> Avg 200W
Working voltage	110V/220V	110V/220V	110V/220V	110V/220V	110V/220V	110V/220V	110V/220V
Working temp	-30°C to +65°C	-30°C to +65°C	-30°C to +65°C	-30°C to +65°C	-30°C to +65°C	-30°C to +65°C	-30°C to +65°C
Working humidity	10%~90%	10%~90%	10%~90%	10%~90%	10%~90%	10%~90%	10%~90%
MTBF	>10,000hours	>10,000hours	>10,000hours	>10,000hours	>10,000hours	>10,000hours	>10,000hours

### Outdoor series

LEDs						
Pixel	5mm	6mm	8mm	10mm	16mm	20mm
Pixel encapsulation	SMD3535	SMD3535	SMD3535	SMD3535/DIP346	SMD3535/DIP346	DIP346
LED composition	1R1G1B	1R1G1B	1R1G1B	1R1G1B	1R1G1B	1R1G1B
Module size	160x160mm	192x192mm	256x128mm	320x160mm	256x256mm	320x160mm
Cabinet size	960x960mm	960x960mm	1024x1024mm	960x960mm	1024x1024mm	1280x960mm
View angle	140°/140°	140°/140°	140°/140°	120°/90°	120°/90°	120°/90°
Refresh rate	≥2500Hz	≥2500Hz	≥2800Hz	≥3000Hz	≥4000Hz	≥4000Hz
Driving method	1/8scan	1/8scan	1/4scan	1/4scan	Static	Static
Brightness	≥7,500nits	≥8,000nits	≥8,000nits	≥8,000nits	≥8,500nits	≥6,800nits
Viewing distance	≥4M	≥5M	≥7M	≥9	≥15M	≥18M
Power	Max800W Avg 400W	Max800W Avg 400W	Max800W Avg 400W	Max800W Avg 300W	Max800W Avg 300W	Max600W Avg 250W
Working voltage	110V/220V	110V/220V	110V/220V	110V/220V	110V/220V	110V/220V
Working temp	-30°C to +65°C	-30°C to +65°C	-30°C to +65°C	-30°C to +65°C	-30°C to +65°C	-30°C to +65°C
Working humidity	10%~90%	10%~90%	10%~90%	10%~90%	10%~90%	10%~90%
MTBF	>10,000hours	>10,000hours	>10,000hours	>10,000hours	>10,000hours	>10,000hours

## Fixed Installation

### Indoor cabinet



#### Typical Applications

Club, bar, concert, stage, conference Live show, TV show  
Indoor event  
Conference

#### Features

High density, from PH2.5 to PH10 Super high contrast ratio  
Wide viewing angle  
High refresh rate

**Eclipse LED** adopts European standard design for indoor cabinet, with its strong steady and durable structure. We also calibrate and optimize the balance between brightness, color and contrast which make excellent color uniformity.



### Outdoor cabinet



#### Typical Applications

Commercial advertising  
Digital signage  
Billboard, stadium, public

#### Features

DIP & SMD both type  
Durable and steady  
Waterproof IP65  
High brightness



Outdoor full color led display is widely used for outdoor advertising. They will play video ,image, text and other programs, all information is in real time and live broadcast .

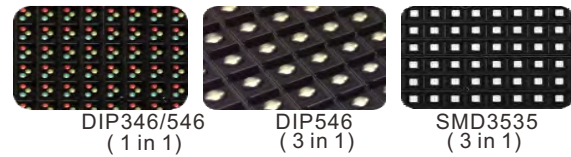


## Outdoor Rental Die-Casting Aluminum

## Stadium LED Display

### OUTDOOR RENTAL

More choices for different occasions



#### Product Features

The die-cast aluminum case is created with a high-precision machine, ensuring complete panel flatness with a special connector design. It is easy to reduce gaps while installing and creating a perfect display.

#### Features

SMD3535 / DIP346 both are available, to satisfy all kinds of users' needs. Special design with light weight and super slim cabinets.

It adopts high quality aluminum alloy cabinet with a good heat dissipation effect that solves the heating problem, reduces noise and power consumption, and minimizes weight of the led panel for easy for installation .

High color saturation, high contrast level. Better display performance.



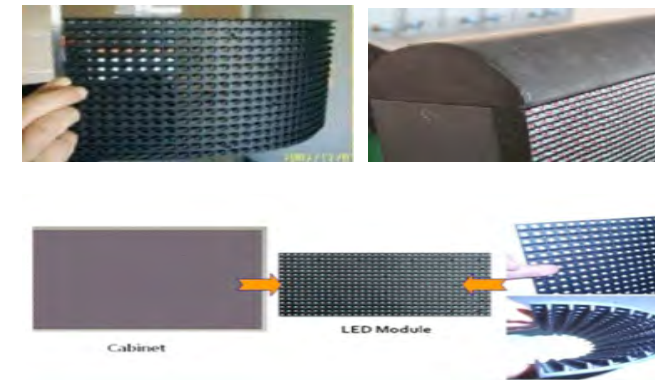
#### Products Specification

Pixel pitch	5mm	8mm	10mm
Pixel encapsulation	SMD3535	SMD3535 DIP246	DIP346 SMD3535
LED composition	1R1G1B	1R1G1B	1R1G1B
Module size	320x160mm	320x160mm	320x160mm
Cabinet size	640x640mm	640x640mm	640x640mm
View angle	140°/140°	140°/140°	140°/140°
Refresh rate	≥2500Hz	≥2500Hz	≥3000Hz
Driving method	1/8scan	1/5scan	1/4scan
Brightness	≥7500nits	≥7500nits	≥7500nits
Viewing distance	≥4M	≥7M	≥9M
Power consumption	Max400W Avg 180W	Max300W Avg 150W	Max300W Avg 150W
Working voltage	110V/220V	110V/220V	110V/220V
Working temp	-30℃to +65℃	-30℃to +65℃	-30℃to +65℃
Working humidity	10%~90%	10%~90%	10%~90%
MTBF	>10,000hours	>10,000hours	>10,000hours
Material	Die-casting	Die-casting	Die-casting

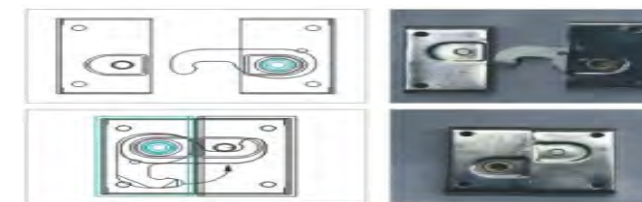


### Perimeter Display

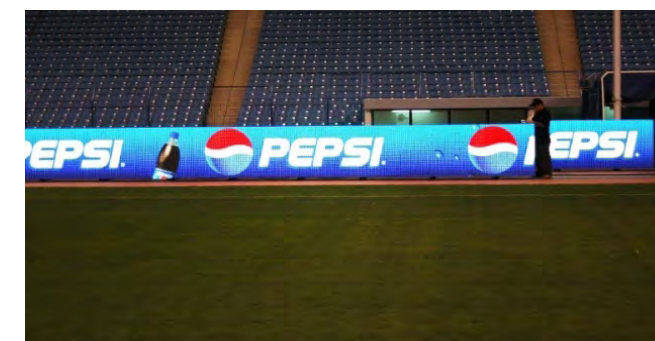
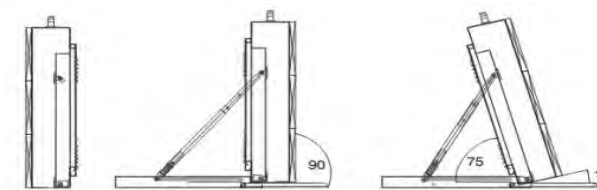
Outstanding refresh rate of 4800Hz guarantees the absolutely flicker-free advertising for your audience across all platforms. High brightness of 8500nits guarantees a sharp and clear display of your advertising even under direct sunlight. Superior grey level of 65536 guarantees that your advertising will be just stunning in front of your audience.



1. Soft, replaceable, impact-resistant covering pad and face mask protect the screen and will not injure players in the event of a collision.



2. Adjustable inclination angle .....  
Adjusts freely to 75 or 90 degrees to ensure the best possible viewing angles. Moreover, the unique supporting stand enhances the waterproofing of the led display



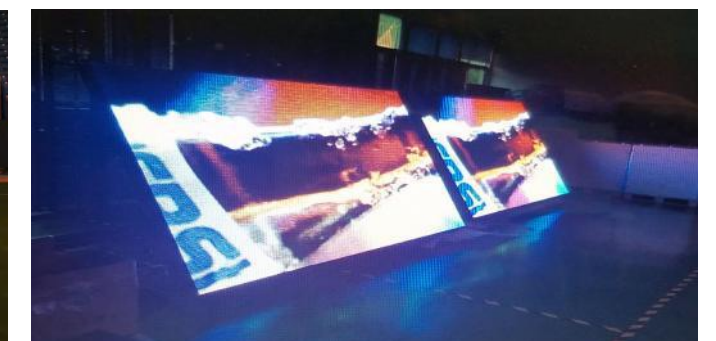
3. IP65 waterproof capability satisfies outdoor permanent application

4. Flicker-free advertising for your audience across all platforms

5. Back-up data and power route makes sure display will work well even when some modules are not working.

6. Quick locks connecting, external cables and power lines mean that workers can quickly and easily assemble and disassemble the cabinets.

7. Software: Specialized sports software is designed for editing and playing advertisement content.





## Front Service LED Sign

### Single Side LED Sign

#### Features

1. Support wall mount, single and double pole mount, are widely use for different places.
2. Different video frequency can be changed freely at the same time, and the image can be enlarged or shrunk.
3. High protective grade IP65
4. Support Wifi/USB/RS232/3G/4G/RJ45 communication modes.



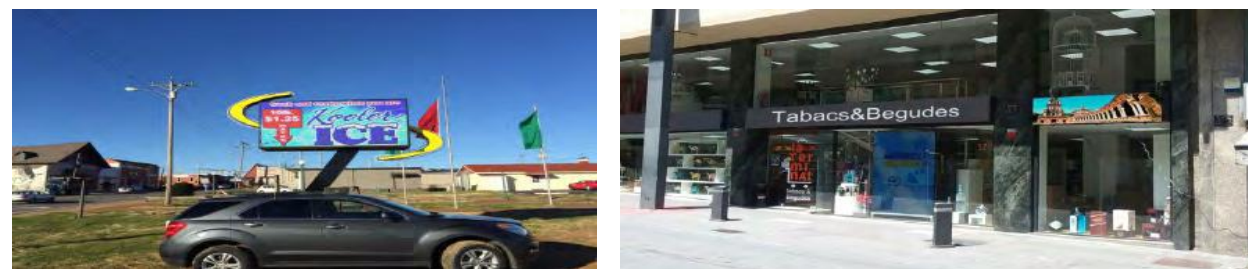
### Double Side LED Sign

#### Features

1. The brightness can be adjusted, to meet different environment needs.
2. Service for both sides is easy for maintenance.
3. Aluminum or steel cabinet frames come with a border to protect LED lamps.
4. CE, RoHS, FCC, UL certificates can be provided.



#### Applications



## Mobile Truck LED Display

Mobile LED display is a complete change from traditional fixed advertising LED display. it performs excellent in different locations for advertising, is more flexible and widely used. They all are weather proof and anti-shake resistant.

General equipment for mobile truck LED display

1. Asynchronous control system is easily prepared for the laptop to change content.
2. Brightness and temperature sensor are provided to change brightness automatically to save power.
3. Generators have no noise pollution cases to keep the best display effect.



Cabinet

Generator

Truck body

Truck



Energy-saving LED displays have exceptionally high brightness and high definition images, are energy and power efficient, and have high levels of waterproof and dustproof limits. It supports WIFI/3G/RJ45, to meet different user's requirements.



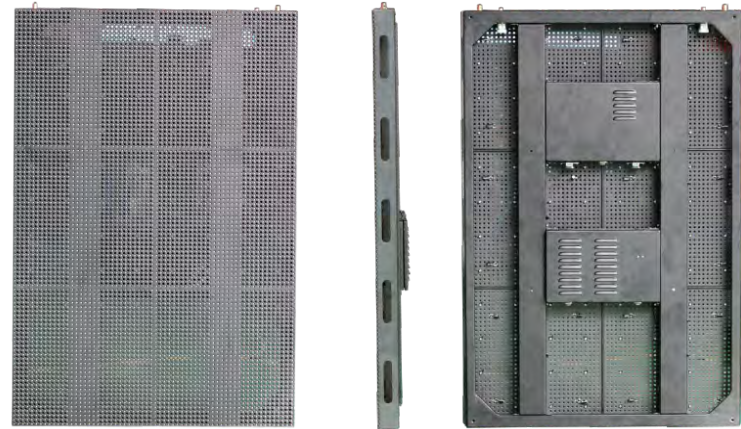
Fixed Type



Lift Type



# LED Curtain



### Typical Application

Outdoor indoor events  
TV show, Concert, night club, bar and so  
on rental movable use

### Features

Transparent  
Light weight  
Easy for assembly and disassembly  
Easy for maintenance

We adopt SMD 3in1 technology, achieve wide view angle and best uniformity showing effect.

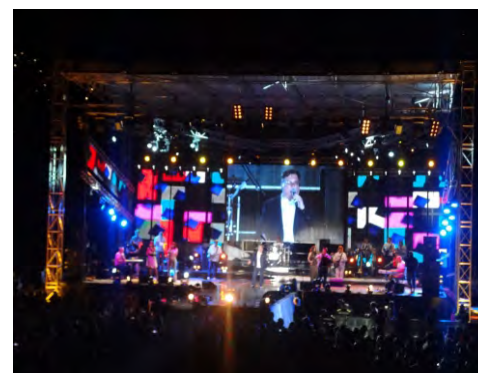
LED curtains adopt ultra-slim aluminum cabinet 7cm, with quick locks around the panel. It is easier for the customer to assembly or disassembly quickly. Transparent LED curtains can also be used behind a glass window, and achieves the effect for the viewer to watch both the screen and still be able to shop.

High refresh rate and high contrast make the video more vivid and attractive.

Connector between the panels makes the connection easier, safe and quick.

### Products Specification

Pixel pitch	10mm	12.5mm	16mm
Pixel encapsulation	SMD3528	SMD3528	SMD3528
LED composition	1R1G1B	1R1G1B	1R1G1B
Module size	320x320mm	400x200mm	256x256mm
Cabinet size	640x960mm	800x400mm	768x768mm
View angle	140°/140°	140°/140°	140°/140°
Refresh rate	≥2000Hz	≥2500Hz	≥3000Hz
Driving method	1/8scan	1/4scan	1/4scan
Brightness	2,000nits	1,800nits	1,500nits
Viewing distance	≥9m	≥10m	≥15m
Power consumption	Max300W Avg 100W	Max300W Avg 100W	Max300W Avg 100W
Working voltage	110V/220V	110V/220V	110V/220V
Working temp	-30°Cto +65°C	-30°Cto +65°C	-30°Cto +65°C
Working humidity	10%~90%	10%~90%	10%~90%
MTBF	>10,000hours	>10,000hours	>10,000hours
Material	Aluminum	Aluminum	Aluminum



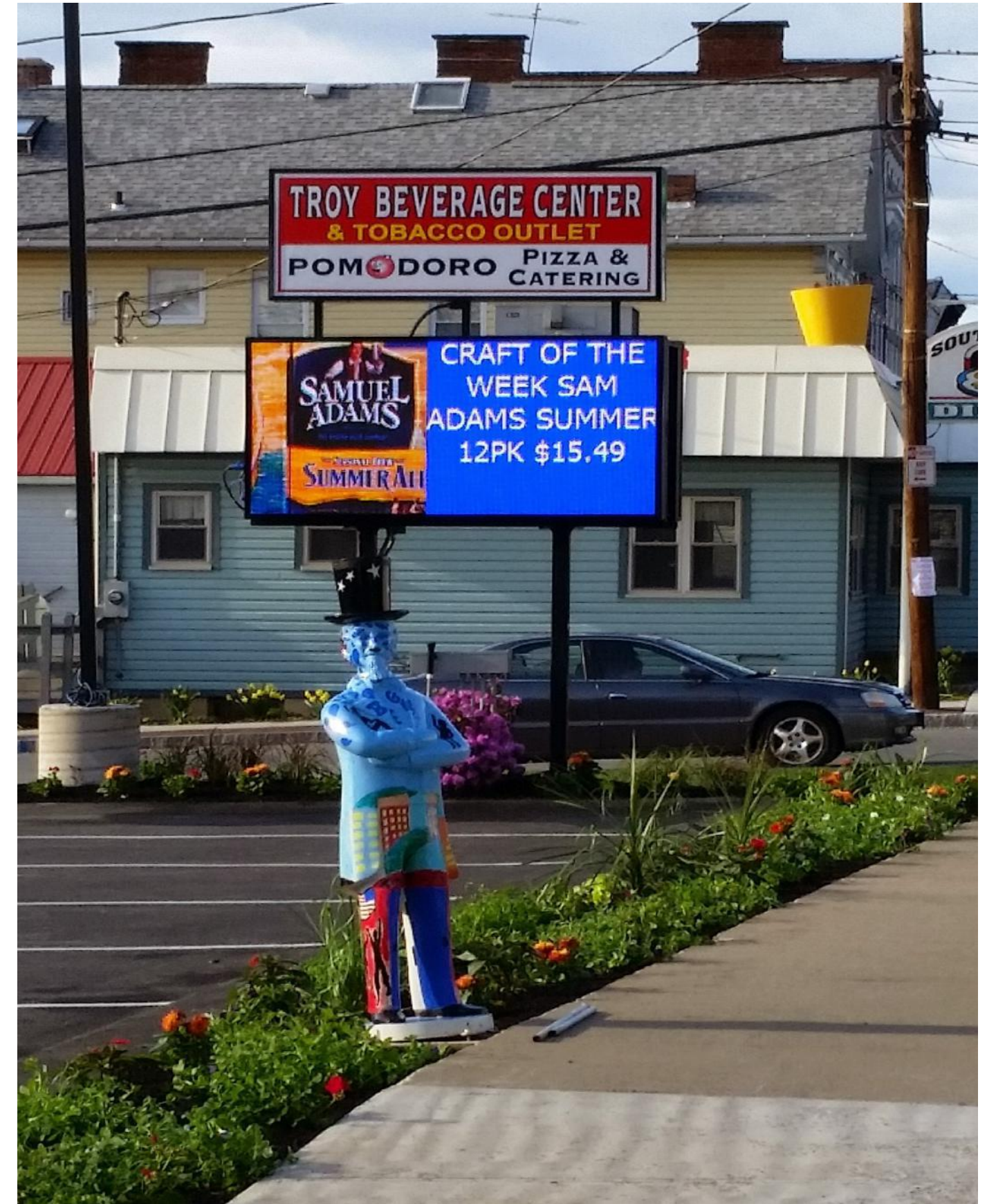




Latham NY AO-PH10



Saudi Arabia AO-PH6



Troy NY AO-PH10



China AO-PH6 SMD



China AO-PH16



Macao AO-PH8

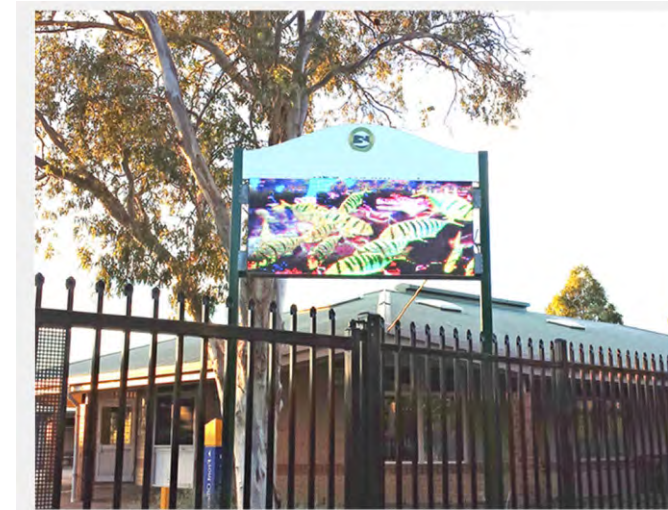


Japan AO-PH5

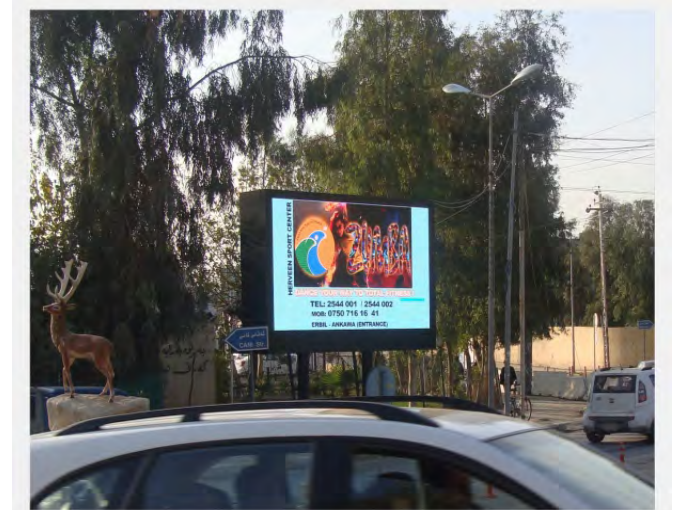




Troy NY AO-PH10



Australia AO-PH10



Iraq AO-PH10



United States AO-PH10



Clifton Park NY AP-PH10



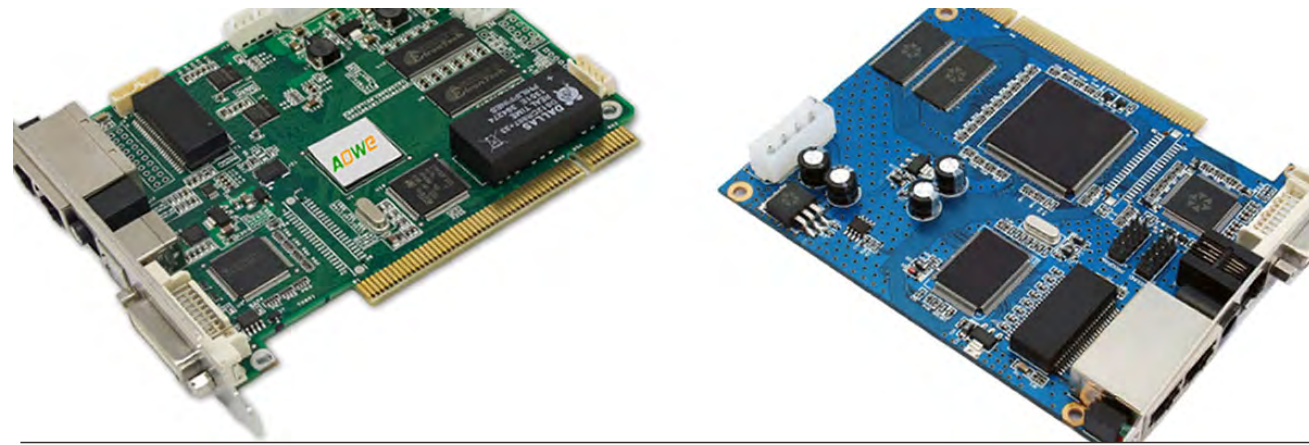
Canada AO-PH10



Latham NY AO-PH10

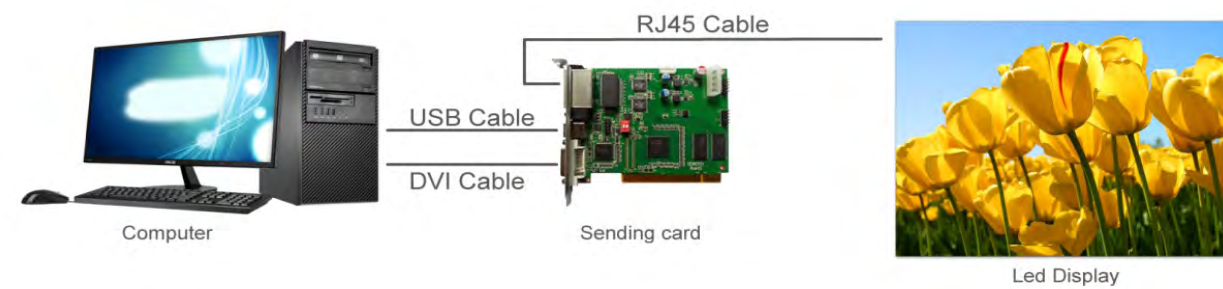


## Synchronous Control

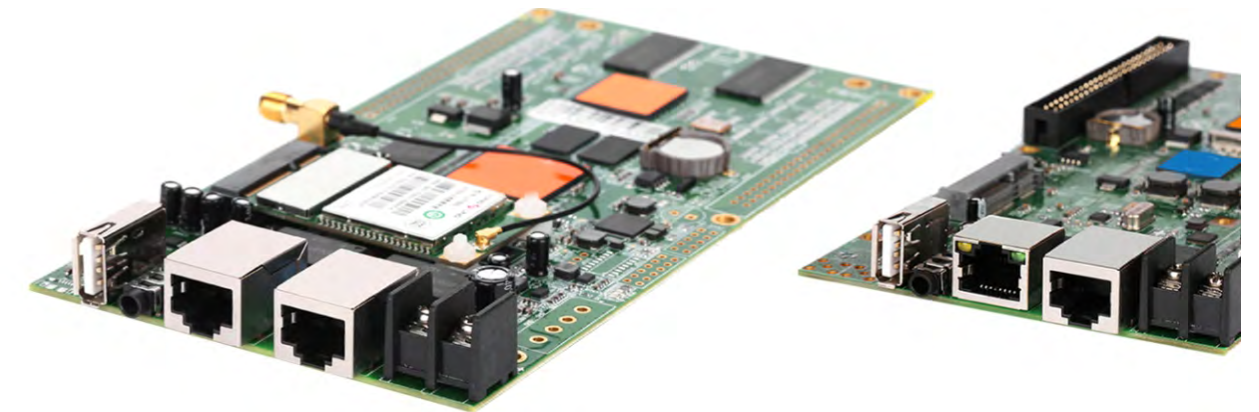


### Synchronous control

1. Synchronous control system will work with a computer or laptop, for a large LED screen.
2. The basic hardware needs a Sending card and Receiving card.
3. Advantage: It will display Live video through a Camera, DVD, VCD.
4. Widely used for outdoor and indoor advertising, rental stage, live show etc.
5. Gray level from 0 to 65536 is optional, and brightness 256 levels are automatic regulation.

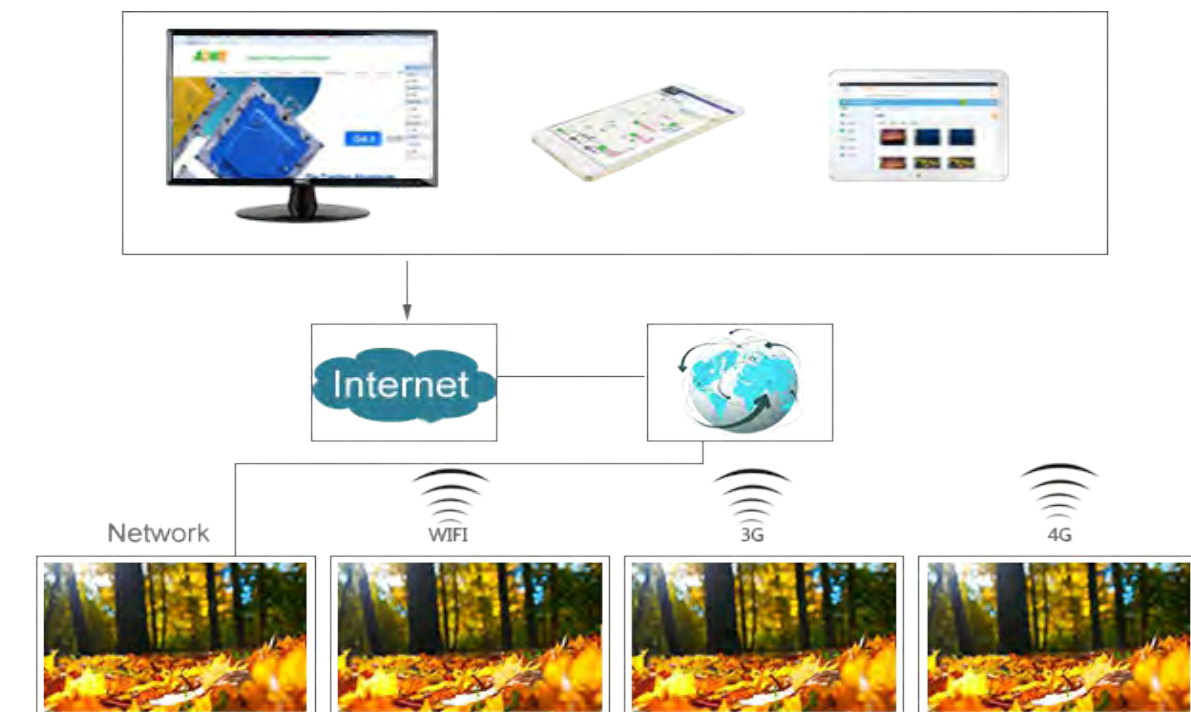


## Asynchronous Control



### Asynchronous control

1. Asynchronous control system can be used off line after information is sent to the LED screen by computer. After completion use the computer to send program to control system. The computer can be removed after using it to send the program to the control system.
2. The basic hardware needs a Master card and Slaver card
3. Advantage: off-line operation, one computer can operate many LED screens; between LED screen and the computer without any cables.
4. Support Computer, USB flash disk, WIFI, 4G control, gives more options for the customer's projects.
5. Gray level from 0 to 65536 is optional, brightness 100 levels are automatically regulated.



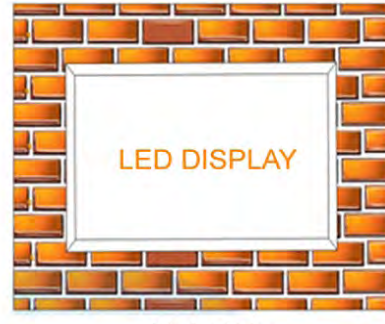


### Installation Structure



LED DISPLAY

Landing style



LED DISPLAY

Inlaying Style



LED DISPLAY

Hanging style



LED DISPLAY

Supporting style



LED DISPLAY

Uprigh style



Wall-attaching style

### LED Display Application



ATTACH TO EXISTING STRUCTURES



CUSTOM BUILT STEEL FRAMING

### Control system / Accessories



Sending card



Receiving card



DVI card



Multi-function card



Master card



Slaver card



Sensor



Fiber Converter



## Certificates



### FCC VERIFICATION OF CONFORMITY

We herewith confirm the following designated product:

**Product Name: LED DISPLAY**

**Main Test Model. : AO-PH10**

**Additional Model: AO-PH2, AO-PH2.5, AO-PH3, AO-PH3.91, AO-PH4, AO-PH4.81, AO-PH5, AO-PH6, AO-PH7.62, AO-PH8, AO-PH12, AO-PH12.5, AO-PH16, AO-PH20, AO-PH25, AO-PH31.25**

(Product Identification)

has been tested and found in compliance with the requirements of 47 CFR PART 15 regulation & ANSI C63.4 for the evaluation of Class B of electromagnetic compatibility. It is only valid in connection with the test report number.

This device complies with Part 15 of the FCC rules, operation is subject to the following two conditions:

- (1) this device may not cause harmful interference, and
- (2) this device must accept any interference received, including interference that may cause undesired operation.

(Identification of regulations/standards)

This declaration is the responsibility of the manufacturer/importer

**Eclipse Led Signs**  
**679 Burden Ave Troy, N.Y. 12180**

(Name /Address)

MANUFACTURER / IMPORTER



#### TEST LABORATORY

This is the results of test that was carried out by Shenzhen BST. from the submitted type samples of the product is in conformity with the specification of the respective standards.  
 The certificate holder has the right to fix the FCC-mark on the product complying with the required rules.



Christina  
 Manager

Jul. 18, 2015

Shenzhen BST Technology Co.,Ltd.

Add: Building No.23-24, Zhiheng Industrial Park, Guankouer Road, Nantou, Nanshan District, Shenzhen, Guangdong, China,

Certificate Search: <http://www.bst-lab.com>.

## Service

### Quality is our soul, service is our purpose!!!

Our goal is to provide the highest value of service and professional solutions to our customers.

#### Pre-sales service

Our team designs and makes solutions based on different requirements from different customers. What you think is what we can do.

#### After-sales services

1. We provide customer service through Skype, phone or email, supply you video or drawings to solve problems.
2. We provide remote control service through Internet to achieve real time and efficient service.

#### Installation Service

1. We provide detailed CAD drawings for the preparation of the metal structure.
2. Special designs have special solutions; we will have the solution to satisfy all customer requirements and needs.

