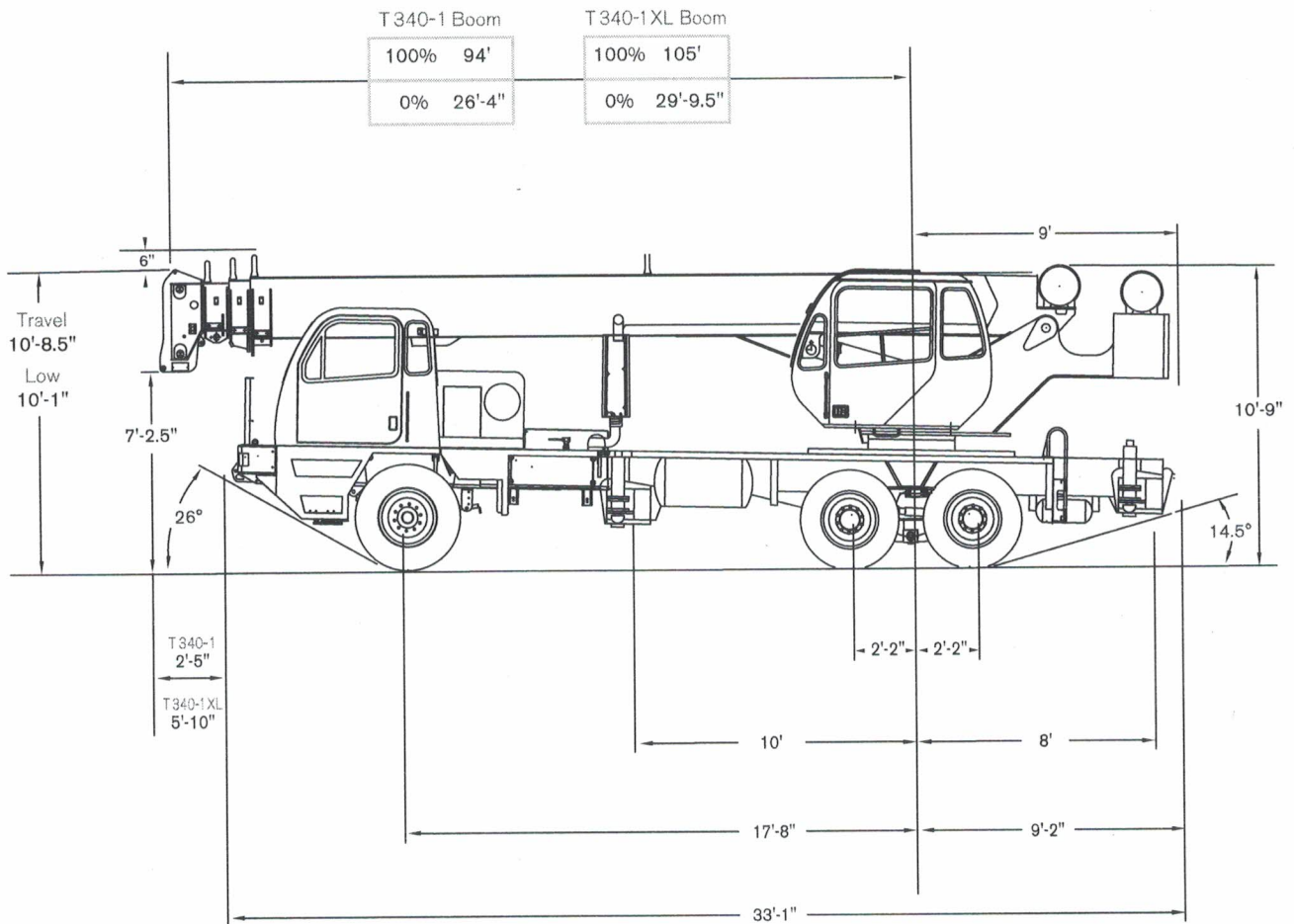


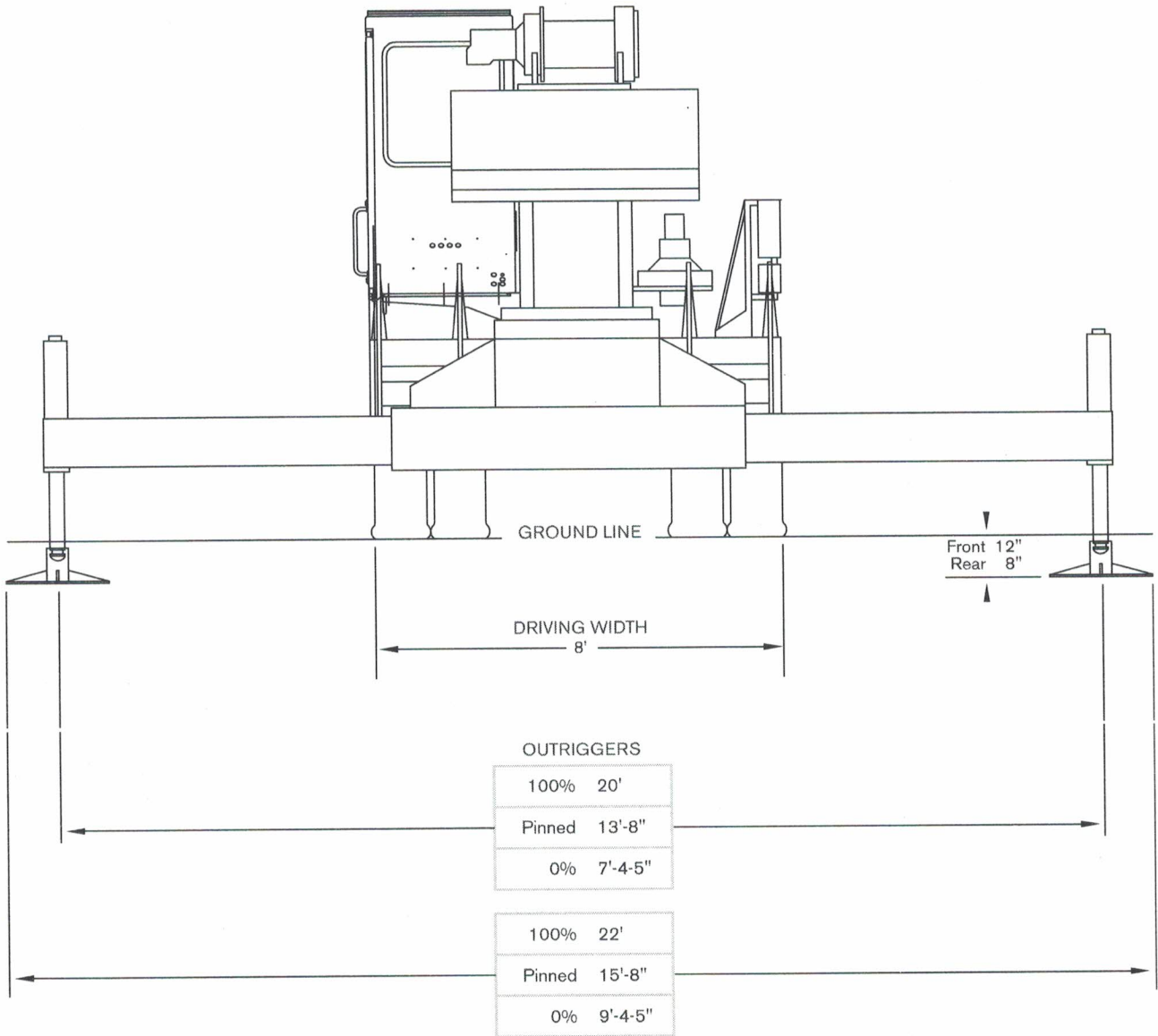
CRANE DIMENSIONS

T 340-1 / T 340-1 XL



CRANE DIMENSIONS

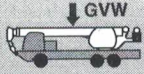








T 340-1 / T 340-1 XL

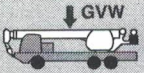
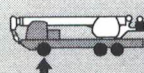
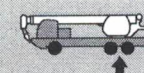








SPECIFICATIONS

T 340-1 / T 340-1 XL

Approximate Crane Weights

T 340-1 Boom in front travel position		 Gross Vehicle	 Front max. 22,000 lb	 Rear max. 45,000 lb
	Configuration: 1/4 tank fuel 200 lb Operator seated in cab Front Tires: 445/65 R22.5-20PR Rear Tires: 11R22-14PR 94 ft Boom/No Jib 2,000 lb total counterweight	47,101	16,575	30,525
Add / subtract for options with 94 ft boom:				
	32 ft swing-on jib	+ 1,270	+ 797	+ 571
	32 ft to 49 ft extendable swing-on jib	+ 1,789	+ 1,007	+ 785
	Auxiliary boom head	+ 100	+ 154	- 54
	40 US hook block on bumper	+ 690	+ 973	- 283
	5 sheave, quick reeving	+ 240	+ 145	95

T 340-1 XL Boom in front travel position		 Gross Vehicle	 Front max. 22,000 lb	 Rear max. 45,000 lb
	Configuration: 1/4 tank fuel 200 lb Operator seated in cab Front Tires: 445/65 R22.5-20PR Rear Tires: 11R22-14PR 105 ft Boom/No Jib 11,000 lb total counterweight	60,053	16,515	43,528
Add / subtract for options with 105 ft boom:				
	32 ft swing-on jib	+ 1,368	+ 1,117	+ 251
	32 ft to 49 ft extendable swing-on jib	+ 1,789	+ 1,343	+ 446
	Auxiliary boom head	+ 100	+ 170	- 70
	40 US hook block on bumper	+ 690	+ 973	- 283
	5 sheave, quick reeving	+ 240	+ 145	+ 95

RANGE DIAGRAM - MAIN BOOM

T 340-1 / T 340-1 XL

Outriggers Fully Extended (100%)

