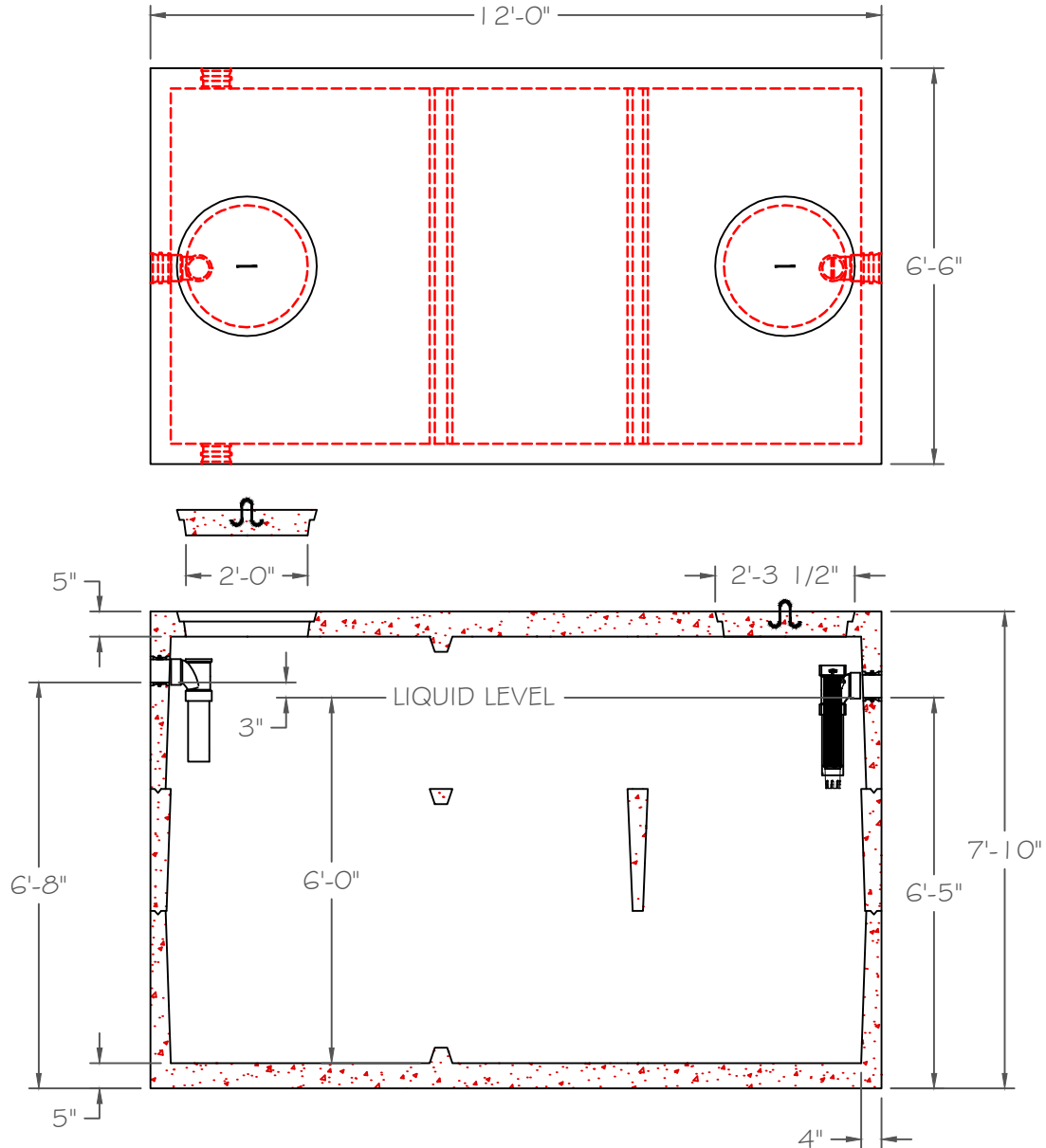


# 3000 GALLON SINGLE COMPARTMENT SEPTIC TANK



## DESIGN NOTES:

- 1) ALL JOINTS ARE SEALED WITH BUTYL RUBBER SEALANT.
- 2) ALL INLETS AND OUTLETS HAVE WATER TIGHT STATE APPROVED SEALS
- 3) AVAILABLE OUTLET FILTER SHOWN
- 4) MEETS CURRENT ASTM C 1227
- 5) CONCRETE STRENGTH 5000 PSI MIN. AT 28 DAYS.
- 6) REBAR: ASTM A-615 GRADE 60

