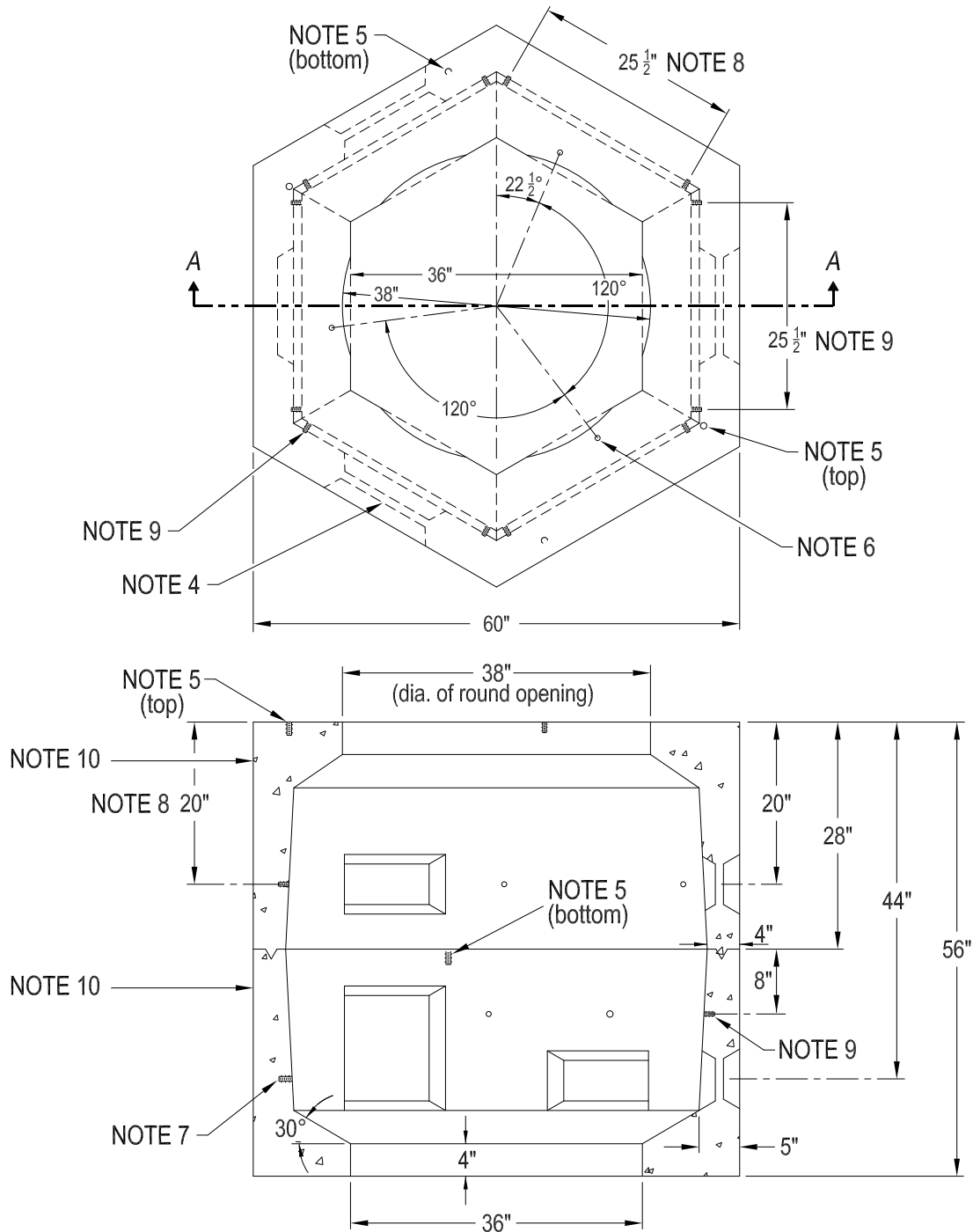


# HANDHOLE - HEXAGONAL - PRECAST CONCRETE

60" WIDE X 56" HIGH

MEETS NORTHEAST UTILITIES SPC H-019



SECTION A-A

## NOTES:

1. DESIGN LOADING SHALL BE IN ACCORDANCE WITH AASHTO HS20-LATEST EDITION.
2. CONCRETE AND CONCRETE DESIGN SHALL BE IN ACCORDANCE WITH ACI 318-LATEST EDITION.
3. CONCRETE SHALL HAVE A MINIMUM 28 DAY STRENGTH OF 4000 psi AND A MAXIMUM 28 DAY STRENGTH OF 5000 psi.
4. FIVE INCH X 12 INCH KNOCKOUTS, (3) IN THE TOP, (3) IN THE BOTTOM AND (1) 12 INCH X 13 INCH KNOCKOUT IN THE BOTTOM SHALL BE CLEAR OF REINFORCEMENT.
5. 3/4 INCH - COIL LOOP INSERTS - 6 INCH - (DAYTON B-16) WITH INSERT LOCATOR PLUG (DAYTON T-21). TWO EACH IN TOP AND BOTTOM SECTIONS FOR LIFTING WITH SWIVEL PLATE. INSERTS ARE TO BE SECURED IN PLACE WITH REBAR.
6. ZINC ALLOY INSERTS 5/8 INCH-11x1 1/2 INCHES FOR EXTENSION (3) ON 41 INCH BOLT CIRCLE.
7. ZINC ALLOY INSERTS 3/4 INCH-10 x 3 INCHES FOR CABLE PULLING (4) OPPOSITE KNOCKOUTS IN BOTTOM SECTION.
8. ZINC ALLOY INSERTS 1/2 INCH-13 x 1 1/2 INCHES (6) FOR MOUNTING JUNCTION CONNECTORS.
9. ZINC ALLOY INSERTS 3/8 INCH-16 x 1 1/2 INCHES (6) FOR SUPPORTING GROUND BUS.
10. MANUFACTURER'S IDENTIFICATION AND MONTH/YEAR WHEN MANUFACTURED SHALL BE LEGIBLY MARKED IN/ON CONCRETE ON THE OUTSIDE OF BOTH UPPER AND LOWER PARTS.

JOLLEY PRECAST, INC.

860-774-9066