

PAD - PRECAST - CONCRETE - TRANSFORMER

75-500 KVA - 64" x 81" x 10"

MEETS NATIONAL GRID SPECIFICATION

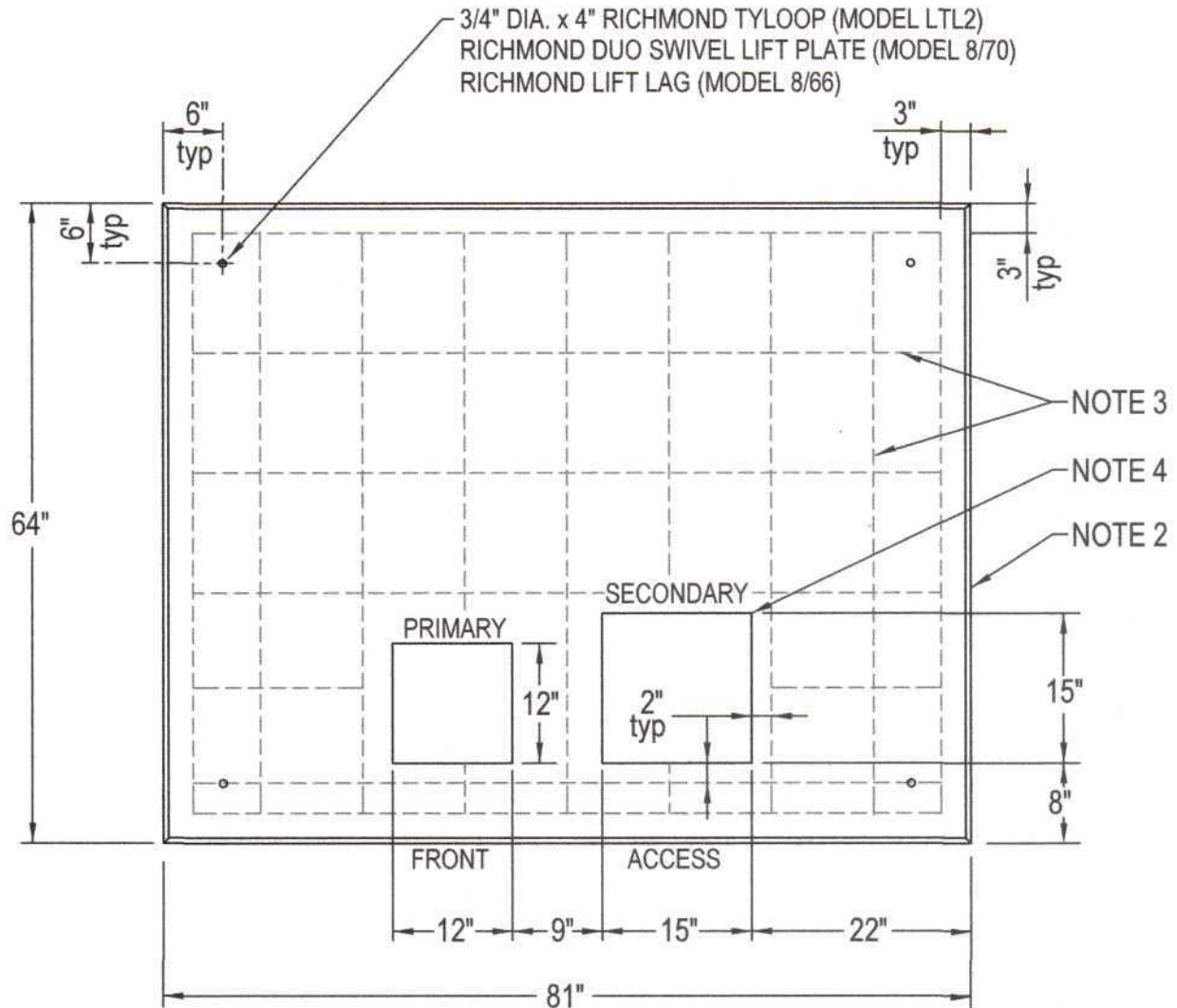


FIGURE 1 - PLAN VIEW

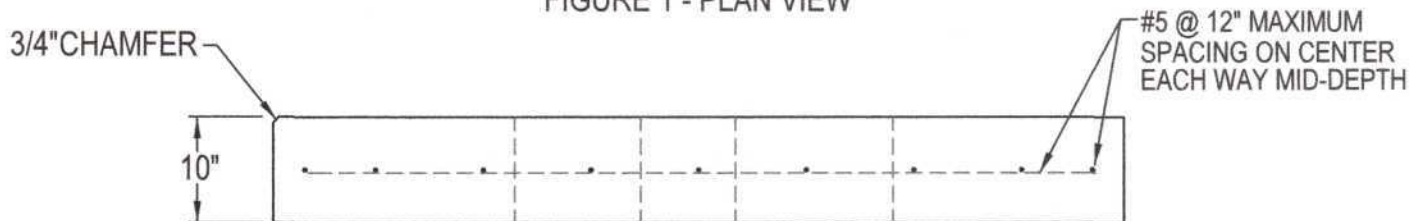


FIGURE 2 - ELEVATION
REBAR DIAGRAM

NOTES:

1. ALL MATERIALS AND WORKMANSHIP SHALL CONFORM TO ACI-318.
2. CONCRETE TO HAVE A MINIMUM STRENGTH OF 5,000 PSI AFTER 28 DAYS. AIR ENTRAPMENT TO BE 6%+/-1%. ALL EXPOSED EDGES TO HAVE A 3/4" CHAMFER.
3. REINFORCING TO BE #5 - GRADE 60 BARS AND SHALL CONFORM TO ASTM A-615 OF LATEST DATE. REINFORCING TO BE PLACED A MINIMUM OF 2" CLEAR FROM FACE OF CONCRETE.
4. ALL OPENINGS SHALL HAVE ADDITIONAL REBAR REINFORCEMENT OF 1-#5 EACH SIDE, MID-DEPTH.
5. FOR PAD INSTALLATION DETAILS REFER TO GS 2582.
6. FOR GROUNDING GRID INSTALLATION DETAILS REFER TO GS 2586.

JOLLEY PRECAST, INC.
860-774-9066