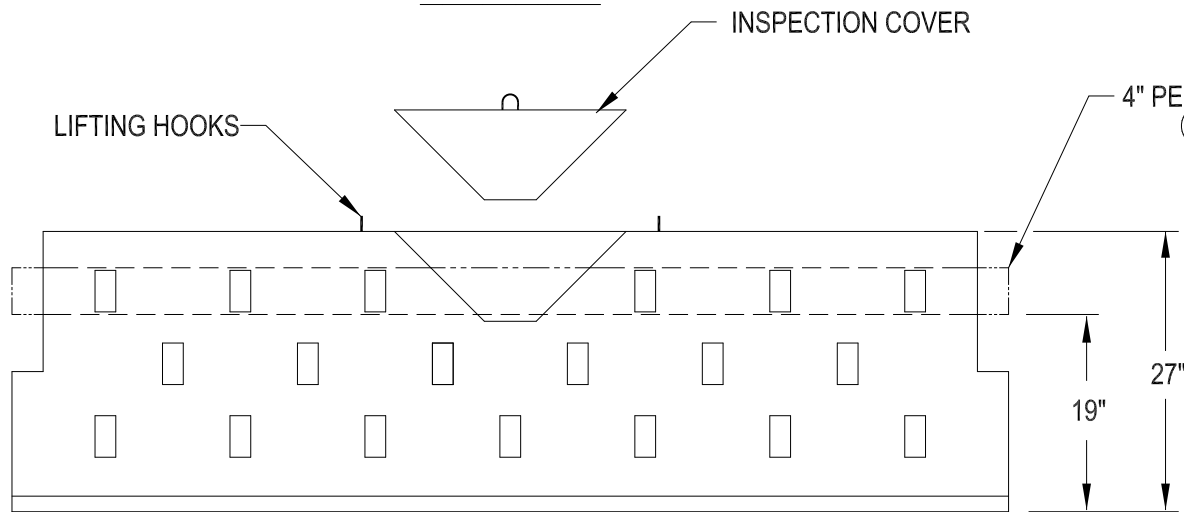


PLAN VIEW



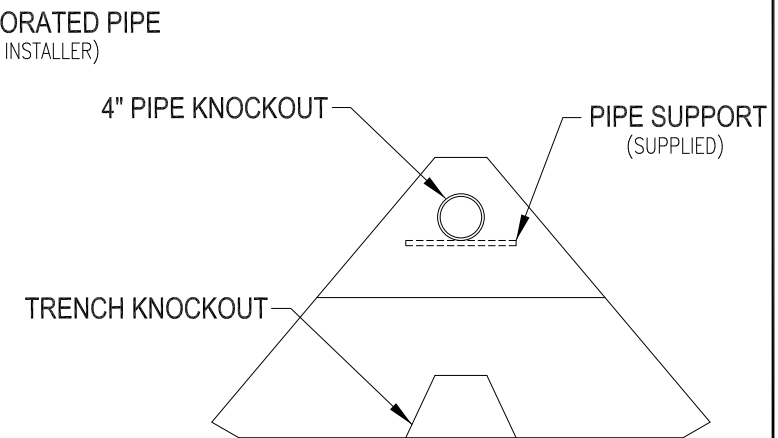
SIDE VIEW

# **TRU - VAP** LEACHING CHAMBERS

## **DESIGN NOTES**

- 1) SLOPED SIDES IMPROVE TRANSEVAPORATION.
- 2) WALLS: 3" THICK.
- 3) No. 3 REBAR REINFORCEMENT
- 4) AASHO H-10 DESIGN STRENGTH (H-20 AVAILABLE)
- 5) WEIGHT: 1850 POUNDS.
- 6) FLOWLINE: 19"

IN MOST INSTALLATIONS, 4" PERFORATED PIPE IS PLACED THROUGH THE UNITS TO DISTRIBUTE EFFLUENT. PIPE IS SUPPORTED AT CENTER OF EACH UNIT WITH A SUPPORT BAR (INCLUDED) PIPE NOT INCLUDED.



END VIEW

**JOLLEY PRECAST, INC.**  
**860-774-9066**